

# Redland Whitewater Centre

Queensland's new home for adventure, sport, and safety.

Located in the Birkdale Community Precinct, the Redland Whitewater Centre is proposed to host canoe slalom events for the Brisbane 2032 Olympic and Paralympic Games. More than a Games venue, this is a legacy project carefully designed for year-round use long after the Games.

This project is funded by the Queensland and Australian Governments, and delivered by the Games Independent Infrastructure and Coordination Authority (GIICA). Redland City Council will be the long-term owner and operator, also delivering the broader Birkdale Community Precinct.

## What's happening now?

We've completed assessments and validation work to confirm the project's feasibility and potential to deliver lasting benefits for the region. With this work now done and funding committed, we can progress the required approvals and continue developing the design.

## Features and benefits

- **All-abilities access:** Whitewater sports for everyone, from first-time paddlers to elite athletes.
- **Training and safety:** Facilities for high-performance training, adventure tourism, and swift water rescue for emergency services, featuring integrated warm-up and training areas.
- **Spectator experience:** Space for up to 8,000 people in Games mode.
- **Environmental care and sustainability:** Positioned on previously cleared land, and surrounded by a 36-hectare protected conservation area, the project prioritises considered planning and design to protect local habitats, honour cultural heritage and achieve long-term sustainable operations.



## Redland Whitewater Centre Reference Design

- 1 Games standard Canoe Slalom Course (220m) with Kayak Cross launch
- 2 Beginner channel for recreation and water safety
- 3 Training lake for paddling, canoe polo, and return flow
- 4 Versatile design for elite, recreational, and tourism rafting/paddling
- 5 Rescue training capability allowing motorised craft
- 6 Sunken plant and pump rooms to reduce visual impact
- 7 Amenities: changerooms, boat storage and operations hub

## Additional elements proposed to be delivered by Redland City Council that complement the Redland Whitewater Centre:

- 8 Visitor facilities: education centre, ticketing, retail and café
- 9 Spectator areas: terrace and grass mound for up to 8,000 people in Games mode
- 10 Car park servicing lagoon and whitewater venue
- 11 Floodable streetscape with dedicated rescue simulation channel
- 12 Beach style swimming lagoon, with zero-depth zones and water play

Image: Redland City Council

## Progressing the project

Moving forward, GIICA will progress the project design, seek approvals and enable further procurement activities to progress.

Planning and approvals are being advanced through a streamlined Queensland Government planning pathway, alongside required Commonwealth environmental and cultural heritage assessments.

Redland City Council is finalising an Environmental Protection and Biodiversity Conservation (EPBC) Act referral to ensure compliance.

Council's early studies indicate the project will have minimal impact on the surrounding environment. GIICA and Council remain committed to protecting local koala habitats and ecosystems.

Sustainability, effective water management, and seamless integration with the broader Birkdale Community Precinct are also top priorities.

Ongoing engagement with First Nations representatives, sporting bodies, and the local community will continue to shape the project and ensure it delivers lasting benefits.

## Stay involved

Subscribe for project updates at [giica.au](https://giica.au) and share your feedback as the project progresses.

For more on the Birkdale Community Precinct, visit the Redland City Council [website](#).

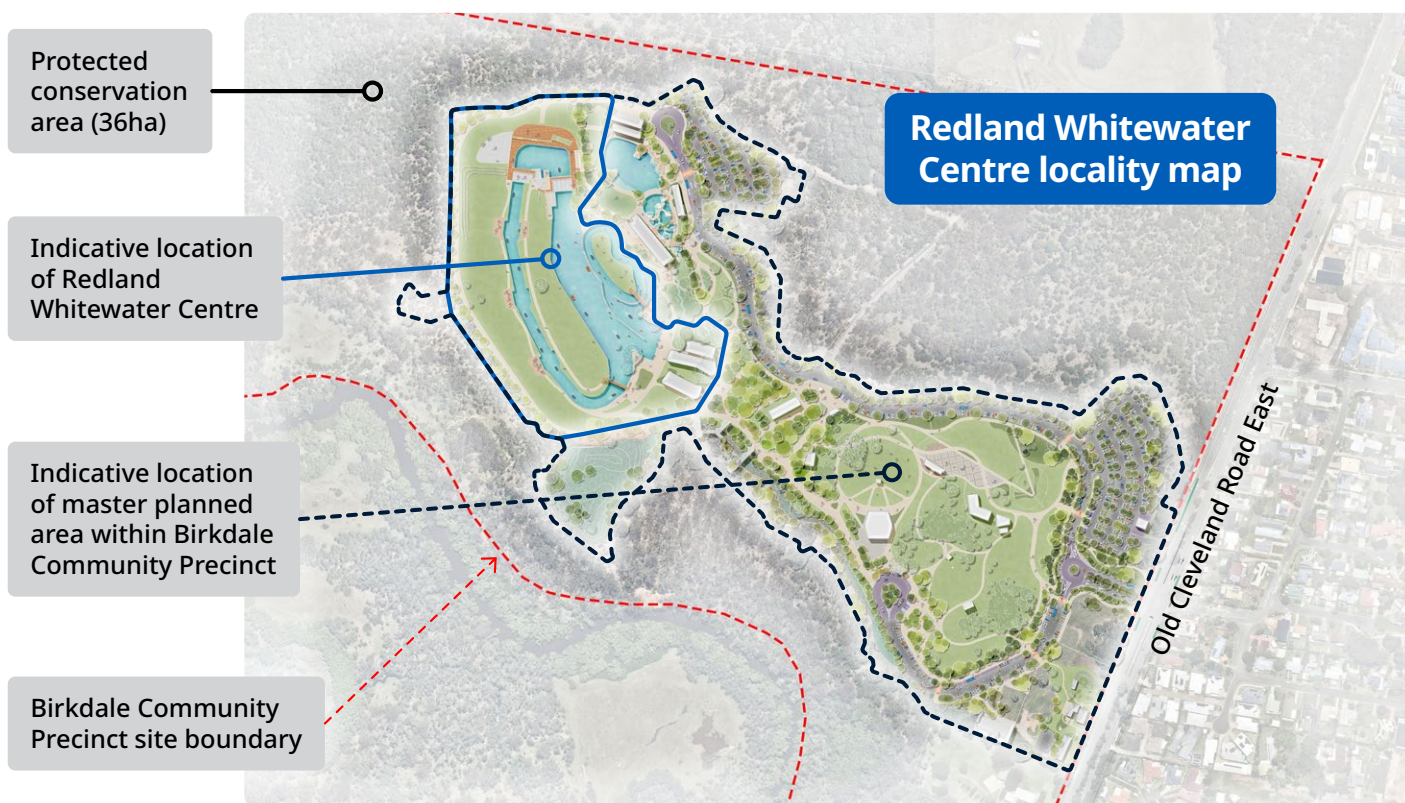


Image: Redland City Council

## Anticipated project timeline



Funded by:



Australian Government

**BUILDING AUSTRALIA**

**DELIVERING  
FOR QUEENSLAND**



**Queensland  
Government**